



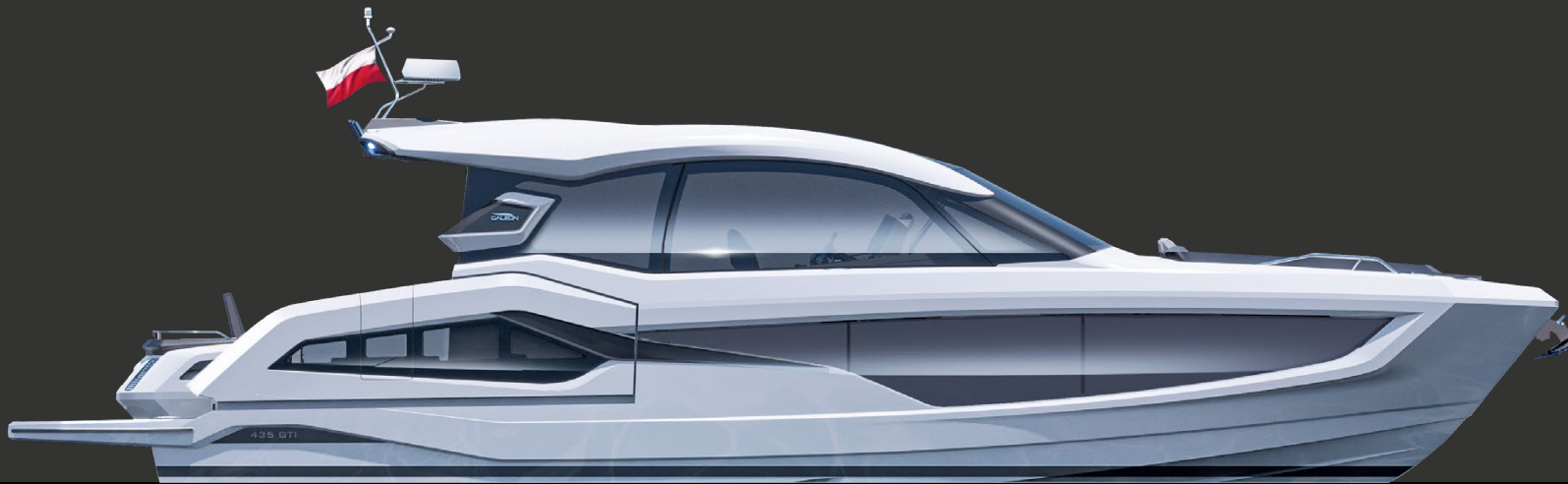
GALEON

435 *GTI*

*GRAND
TOURING ICON*

435 GTI

The Grand Touring inboard embodies sporty aesthetics, precise handling and unparalleled arrangement of space on board.



4^{GEN}
GALEON

TONY CASTRO
DESIGN & NAVAL ARCHITECTURE



Length of the hull: 12,55m
Length overall: 13,65m
Beam of the hull: 4,11m
Beam overall: 5,91m



Min: Volvo D6 IPS650 2x 353kW/480hp
Max: Volvo D8 IPS800 2x 441kW/600hp



Fuel tank capacity: 1200 dm³
Water tank capacity: 300 dm³
Grey water tank: 150 dm³
Black water tank: 100 dm³



Draft max: 1,0m₁
Bridge clearance: TBD₂
Height to transport: 4,29m



Mass of Light Craft Condition: 16208kg₁
Maximum Load: 3590kg



Crew limit: 14
Category: B

₁ - estimated ₂ - to be determined

Overview



Grand Touring Icon

Galeon Yachts is poised to unveil a new addition to the 435 series - the Grand Touring Icon day cruiser with twin inboard engines. The GTI inherits all the remarkable traits of its GTO predecessor showcasing a streamlined design with sleek contours, seaworthy handling and performance alongside a host of functional features onboard.

The two-tone exterior boasts full-length windows and partially glazed balconies complimented by striking sporty details. A climate-controlled wheelhouse, enveloped in glass, offers unobstructed, panoramic views while protecting the passengers from the elements. Two distinct outside leisure areas located bow and aft provide ample space for entertaining guests whether cruising or anchored.

Versatile layout

The cockpit showcases significant GTI improvements including transformable seating that allows guests to face bow or aft as well as fold into a completely flat sunpad. Concealed beneath the seats is a compact garage, ideal for storing a Zodiac 200 roll-up dinghy or various water toys. Further enhancing functionality is the hydraulic platform providing easy access to the water.

For added comfort, a retractable sunshade offers respite from the sun while stationary or during cruising. Enthusiastic anglers will appreciate the six roof-mounted rod holders. The 435 GTI cockpit stands out for its spaciousness and array of practical features.

Galeon Yachts



GTI



Beach Mode

Galeon Yachts have gained renown for popularizing the Beach Mode concept, featuring deployable port and starboard balconies that substantially extend the width of the cockpit. This innovative design provides ample space for various activities and enhances the experience of entertaining guests onboard.

The GTI variant further enhances this concept with the inclusion of a spacious hydraulic platform providing additional space for recreational activities and easy access to the water.



Climate controlled wheelhouse

The main deck includes a wet galley on the port side, a U-shaped dinette, and three independent sport seats opposite the helm station.

Remarkably, both side windows can be lowered into the hull, showcasing impressive engineering. Additionally, an oversized, tinted sunroof, comprised of two pieces, allows quick retraction.





435 GTI



Versatile bow configuration

The flush floor design facilitates easy access to the wide bow area on the port side, where a versatile seating arrangement with a table or a luxurious sunpad is available.

The front bench is ergonomically designed in a reclined position, featuring sporty headrests and stylish two-tone quilted upholstery. Soft, foam decking enhances comfort and adds a touch of sophistication on board, setting the stage for an unforgettable weekend getaway with the 435 GTI



Open cockpit design

The GTI variant boasts an open-plan cockpit for easy passenger access. Sliding glass doors separate it from the main deck, revealing a versatile leisure area.

The aft bench can face forward or aft and converts into an extended sun pad. Beneath, a hidden garage offers storage. With the hydraulic bath platform, water access is simplified and doubles as a dinghy lift.



YACHT



Lower deck features

Below deck, a finely appointed galley area boasts ample storage and provides standing height, ensuring easy access to both guest cabins.

The head is equipped with upscale cabinetry and a walk-in shower, promoting a neat and organized environment.





GTB



Luxury master bedroom

The owner's quarters is situated forward, featuring a comfortable double bed and abundant storage options. Enhanced natural light fills the interior, courtesy of oversized windows, a ceiling skylight, and dispersed LED illumination.

The quality and finish uphold Galeon's renowned standards, showcasing sophisticated curved woodwork, stainless steel accents, and a range of customizable options to suit individual preferences.



Guest's accommodation

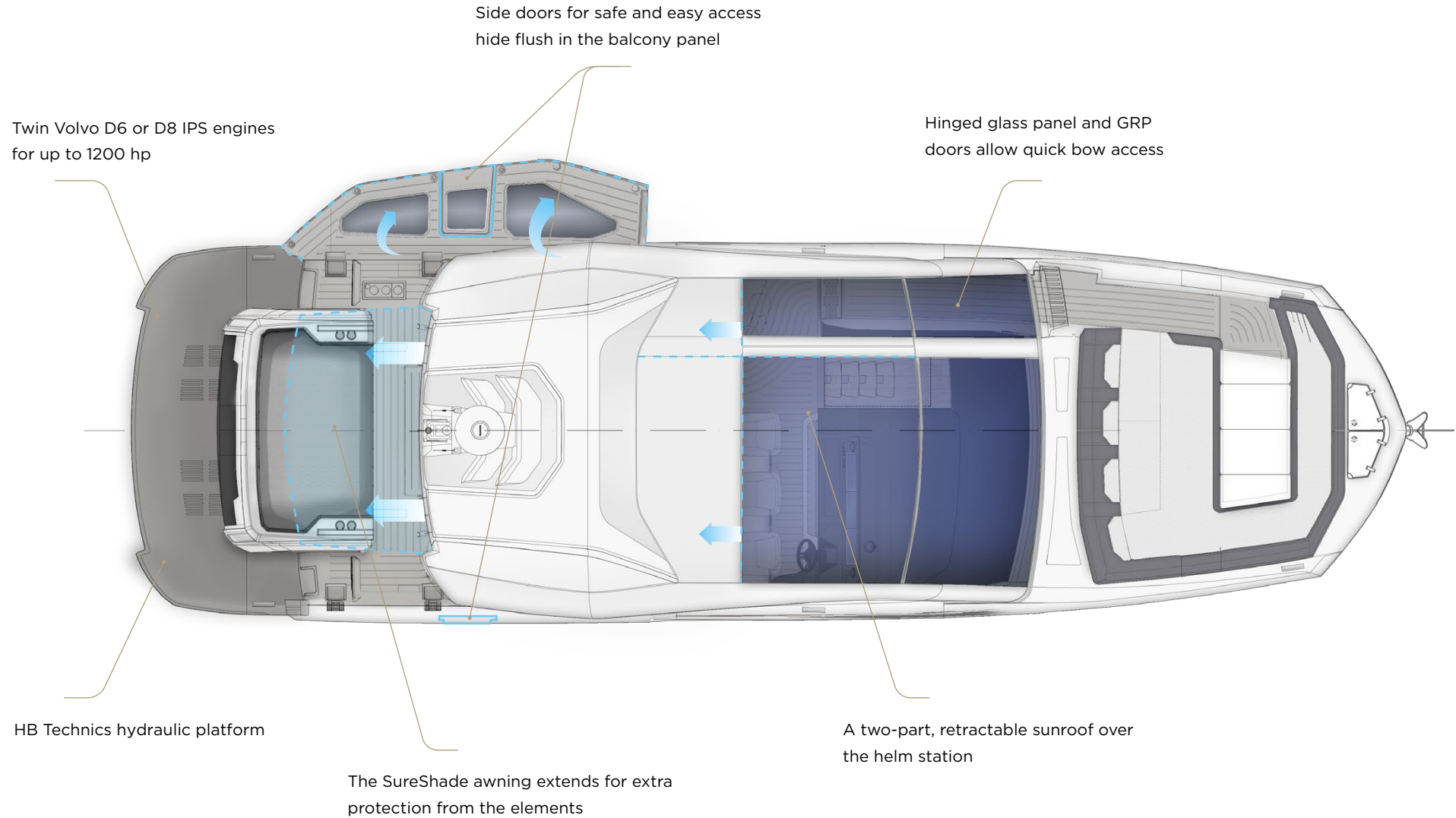
The guest cabin is located midship and holds a pair of double and single beds. Notice the full-sized doors for easy access during the day and privacy by night for your guests.

The luxurious quality of materials and finishing elevates the 435 GTI to the pinnacle of its class, ensuring that overnight voyages become unforgettable experiences.



Overview

435 GTI



Main Deck

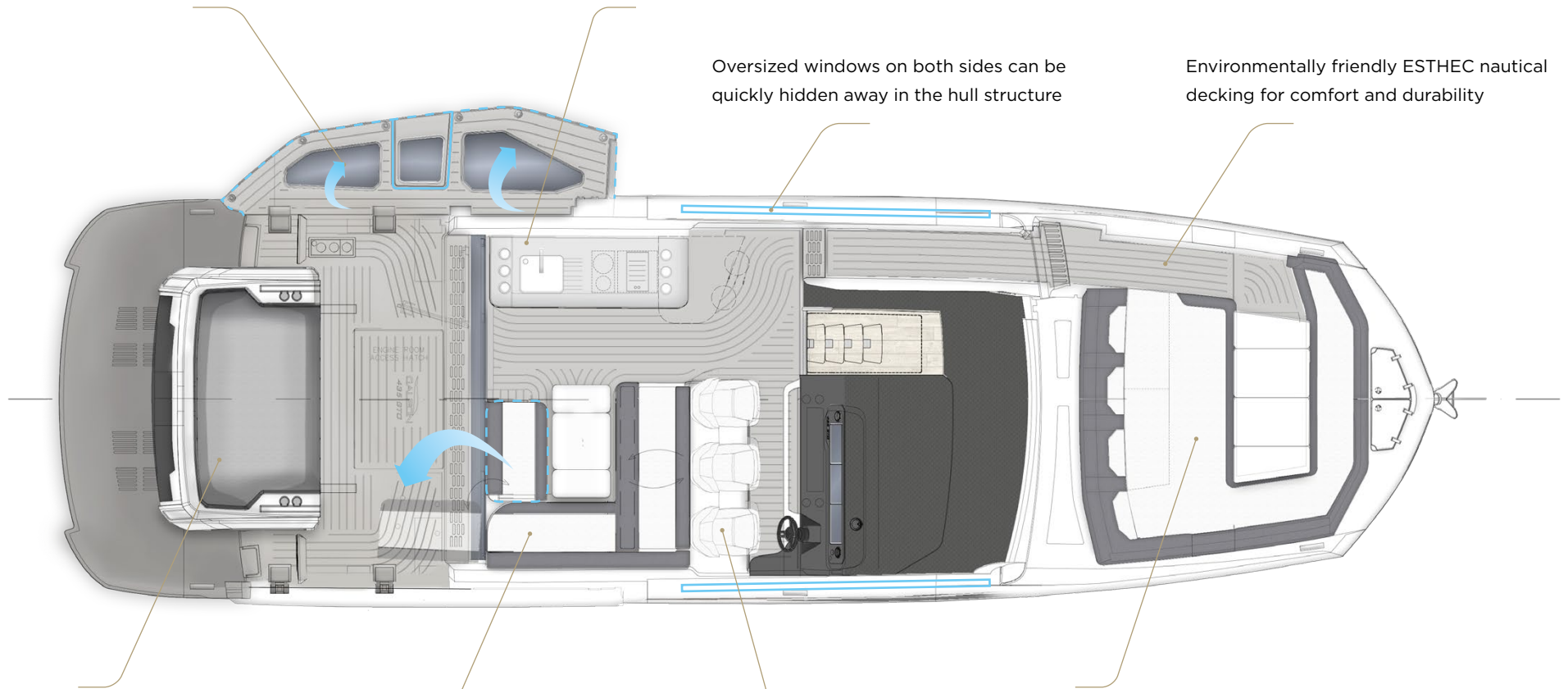
443 435 GTI

Extend both, partially glazed, balconies for extra space in the cockpit

Wet bar includes a sink, fridge, grill and extra storage

Oversized windows on both sides can be quickly hidden away in the hull structure

Environmentally friendly ESTHEC nautical decking for comfort and durability



Transformable seating with a garage fits a Zodiac 200 roll-up dinghy

A U-shaped sofa can be rotated 90° into the cockpit

Triple sport seats with armrests are electrically adjusted

Bow rest area can be transformed into a sunpad

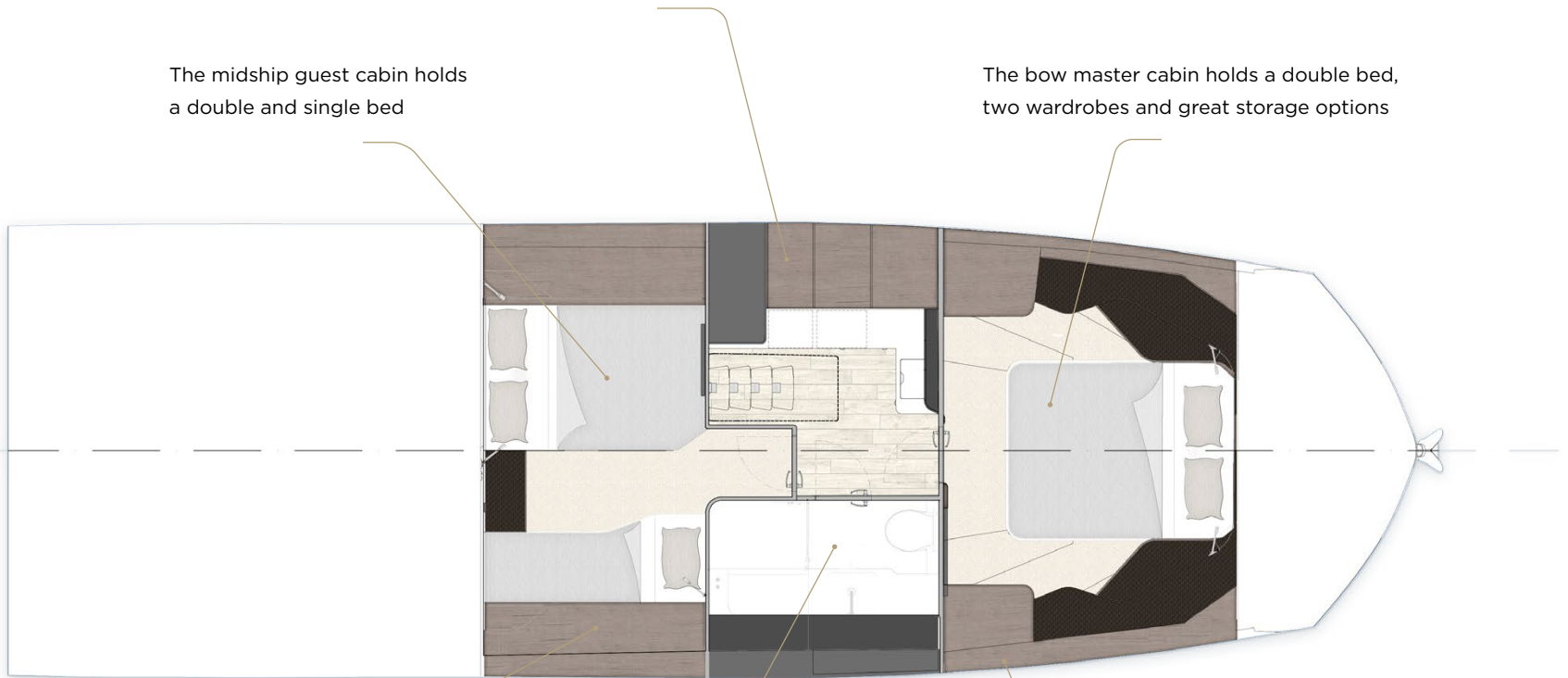
Lower deck

435 GTI

Lower deck galley offers plenty of storage for supplies

The midship guest cabin holds a double and single bed

The bow master cabin holds a double bed, two wardrobes and great storage options



Custom cabinets and lockers for keeping things organized and tidy

Bathroom offers standing height and a separate shower for comfort

Bright and welcoming interior thanks to large windows and a skylight

The Galeon Company

Each Galeon yacht is a unique combination of modern engineering and precise craftsmanship necessary to create an uncompromising emblem of Your success.

Over 40 years of experience and constant commitment to innovation and quality, we have seen spectacular growth and an ever-expanding base of satisfied customers around the globe.

Galeon - the future of luxury yachts.



435 GTI

Galeon Yachts
Starogardzka 22
83-010 Straszyn, Poland

galeon@galeon.pl
www.galeon.pl
fb.com/galeon.yachts

